

Making a positive impact on our environment for today and future generations.

WTR Series



WTR Series Recycle Systems



WTR-10-0M10 shown with optional pH controller, WX-0130 and ORP controller, WX-0131

THE COMPACT WTR SERIES SYSTEMS ARE GREAT FOR SMALL WASH BAY SET-UPS. THEY ARE A COST-EFFECTIVE SOLUTION TO FILTER WASH WATER FOR REUSE THROUGH A PRESSURE WASHER OR FOR PROPER DISPOSAL.

ALL OPTIONS CAN BE ADDED TO THE WTR SERIES AFTER THE INITIAL SET-UP.



30-micron filters



Optional pH controller, WX-0130

FEATURES

- Quality recycled wash water without common odor problems
- Easy operation and maintenance
- Poly-skid is constructed of hardened polymer to be non-corrosive and can be easily lifted and moved with a forklift
- ETL listed control panel
- Easily accessible pumps
- Hose connectors are designed for easy accessibility and quick installation
- 30-micron filters

CERTIFICATION

- ETL Certified – US and Canada

MODEL NUMBER	FLOW RATE	CARTRIDGE FILTERS	CARBON FILTER	FILTER PUMP	TRANSFER PUMP	PRODUCT TANK	PRESSURE TANK	POWER REQUIREMENTS	DIMENSIONS (LxWxH)	SHIP WT.
WTR-10-0M10	0-10 GPM	(2) 30-micron, 100 sq. ft.	110 lb.	1.0 HP	1/2 HP	80 gallons	20 gallons	208-230V, 1Ø, 15.0A	6x4x5ft.	750 lb.
WTR-10-0M30	0-10 GPM	(2) 30-micron, 100 sq. ft.	110 lb.	1.0 HP	1/2 HP	80 gallons	20 gallons	208-230V, 3Ø, 8.0A	6x4x5ft.	750 lb.

ACCESSORIES:

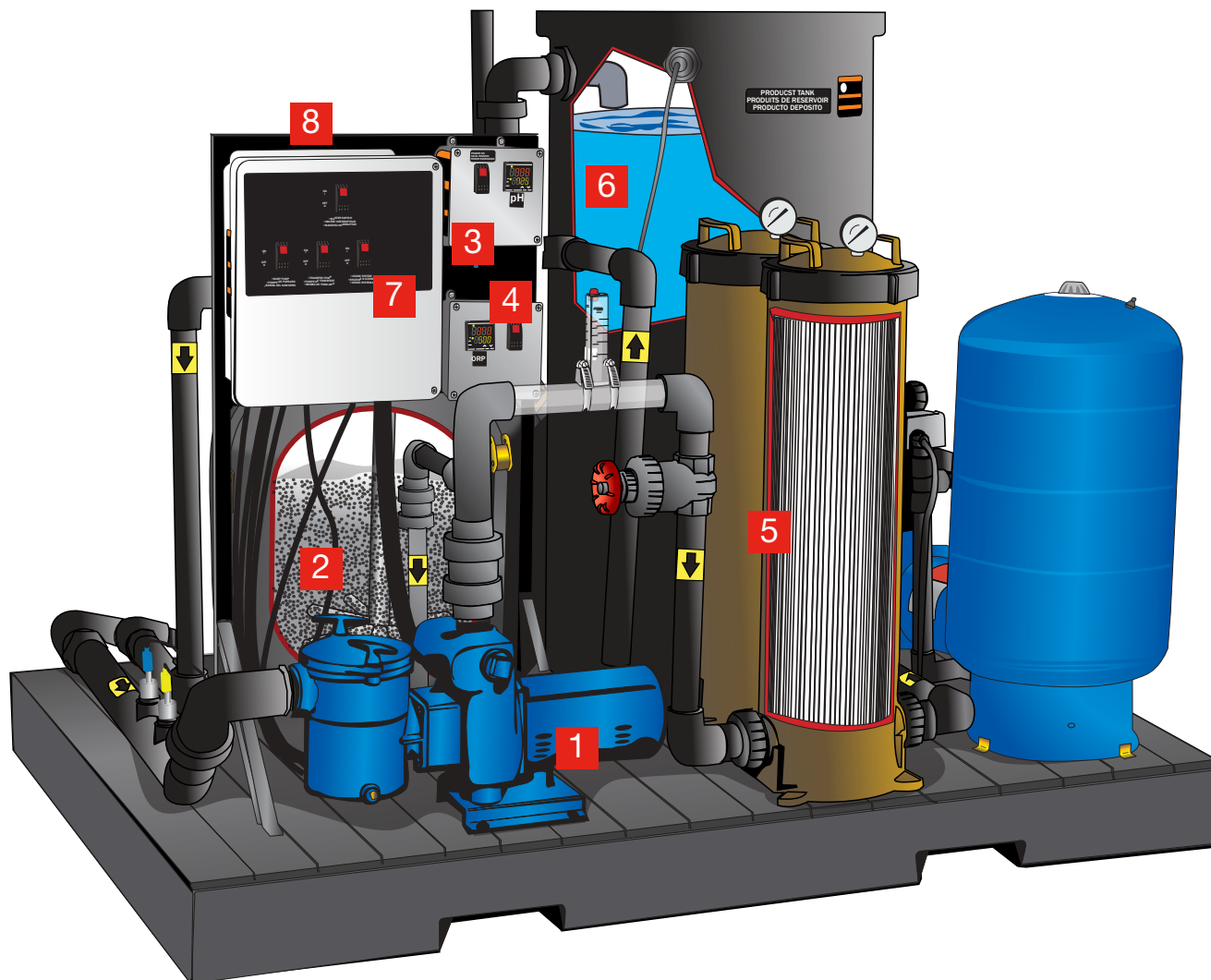
PART NUMBER	DESCRIPTION	FITS MODELS
19-0274	Filter – Replacement filter for cartridge filter, 30-micron, 100 sq. ft., 2 filters needed	All models
33-0302	Activated carbon – Order per pound	All models
855-0046	Ozone – For specialized applications where sterilization of the waste stream is desired; 12 watts, 6 grams/day	All models

OPTIONS:

PART NUMBER	DESCRIPTION	FITS MODELS
WX-0130	pH controller – For when pH adjustment is needed; 1.0A, 48 ml/minute chemical pump	All models
WX-0131	ORP controller – For when ORP adjustment is needed; 1.0A, 48 ml/minute chemical pump	All models
WX-0132	460V – Upgrades 208-230V model to operate at 460V	WTR-10-M30
WX-0145	pH and ORP controller – For when both pH and ORP adjustment is needed; 1.0A, 48 ml/minute chemical pump	All models

WTR Series

Process & Flow Description



- 1. SURFACE-MOUNT SUMP PUMP** – Untreated wash water is introduced into the system via a 1.0 HP surface-mount sump pump, which is included and located on the unit.
- 2. ACTIVATED CARBON FILTER** – The final treatment stage of the system occurs as the water is filtered through activated carbon which absorbs hydrocarbons, herbicides, pesticides, metals and dozens of other carbon-based constituents. Activated carbon also works as a polisher for treated water to remove chlorides.
- 3. pH CONTROLLER** (Option #WX-0130) – The automated pH control system keeps the water at an appropriate pH level so the germicide is effective at killing bacteria and controlling odor.
- 4. ORP CONTROLLER** (Option #WX-0131) – For longer term control of bacteria, the ORP injection system automatically measures and injects a germicide to control odor by killing odor-causing bacteria.
- 5. CARTRIDGE FILTER** – Designed to trap and remove solids from the water. Reusable 30-micron dual filters. Pressure gauge indicates when filters need to be changed or cleaned.
- 6. TREATED WATER IN HOLDING TANK** – Once the water is treated, it is pressurized where it will be ready for reuse at 30-PSI to 50-PSI.
- 7. ELECTRICAL CONTROL PANEL** – ETL listed NEMA-4 rated corrosion-proof control panel for safe and reliable operation.
- 8. CORONA DISCHARGE OZONE INJECTION** (Accessory #855-0046) – Wash water is injected with a high concentration of ozone via a corona discharge ozone injection system for a "quick kill" of live bacteria on contact. Ozone also breaks up emulsified oils, allowing them to coalesce. (*Hangs from back of control panel bracket*)

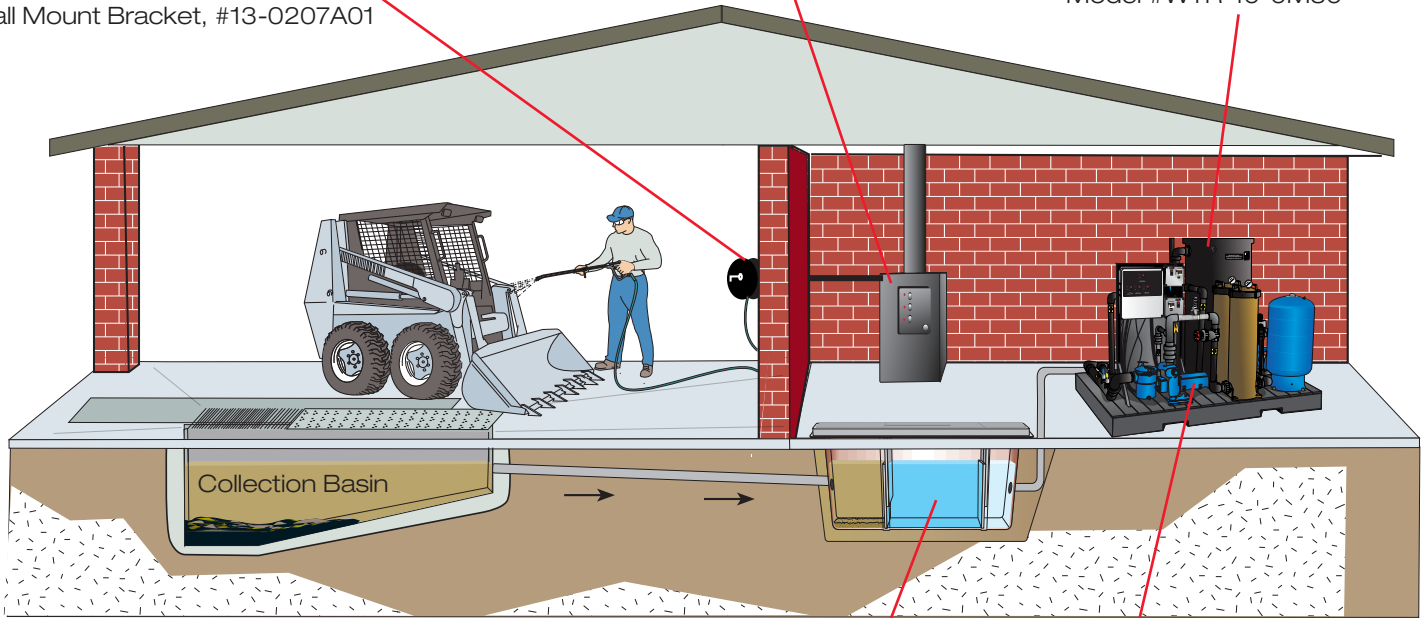
WTR Series

Sample Equipment Wash Pad Application

Remote Box for Pressure Washer
with Hose Reel, #50-0196 and
Wall Mount Bracket, #13-0207A01

Stationary Natural Gas/LP
Hot Water Pressure Washer
Model #HEG-3004-0E2G

Wash Water Recycle System
Model #WTR-10-0M30



3' x 9' Fiberglass
3-Stage Collection Pit
Model #12-0074

1.0 HP Surface-Mount Sump
Pump Included with
System, #3-0460

RECOMMENDED APPLICATIONS:

- Rental Yards
- Heavy Equipment Dealers
- Trucking Facilities
- Military Bases
- Truck Rental Fleets
- Diesel Repair Facilities
- Forklift Washing Operations
- Aircraft Maintenance and Restoration
- Shipyards
- Municipalities/State DOTs
- Oil Fields
- Engine Rebuilders and Manufacturers

ADDITIONAL OPTIONS:

- Ozone
 - pH controller
 - ORP controller
 - 460V
 - Stainless-steel water/oil separator tank
 - 300 or 600-gallon WTA settling tanks
- Consult your dealer for more information.

THE IMPORTANCE OF A PROPER PIT SYSTEM:

Once equipment is washed, the untreated wash water flows into your pit system. A proper pit system for your application is the first step in proper wash water treatment and a critical element in any wash water recycle system.

Consult your dealer to determine the pit system configuration that works best for your application.

NorthBay
EQUIPMENT
SERVICE & SALES



3647 Standish Avenue, Santa Rosa, CA 95407
(707) 585-0100 | www.northbayequipment.net